

December 1, 2021

## Executive Director's Message

Hi, it's James Bulmer – I've taken over Eric's column this month.

First of all, SIMSA announced me as its new "Industrial Concierge" (see press release [HERE](#)). I will provide a free service to members; assisting in your energy efficiency/carbon reduction needs as well as assisting you fulfill the major mining companies' digital innovation needs. This position is co-funded by the International Minerals Innovation Institute (IMII) and PrairiesCan (WD).

As BHP mentioned in their AGM [HERE](#) on page 7, their goal is that their supply chain will have a 30% reduction from 2020 levels in 2030, and then be net-zero by 2050. This follows similar proclamations by a growing list of other companies.

To add fuel to the fire, the impact of the carbon tax is ever increasing. Currently the tax sits at \$42/ton CO<sub>2</sub> as of 2021, slated to become \$178.5/ton CO<sub>2</sub> to 2030 (GST inclusive). This means that the carbon tax in real dollars will be:

- Power: in 2021 it is \$0.006713/kWh; in 2030 it will be \$0.02853/kWh (assuming electricity mix stays the same).
- Natural Gas: in 2021 it is \$0.0822 per cubic metre; in 2030 it will be \$0.349 per cubic meter
- Gasoline: in 2021 it is 9 cents/litre; in 2030 it will be 39 cents/litre
- Diesel: in 2021 it is 11 cents/litre; in 2030 it will be 48 cents/litre

Therefore, saving energy can be a major benefit:

- Stay competitive and successful.
- Achieve ongoing energy savings.
- Meet emissions reduction targets and sustainability goals.
- Reduce your marginal cost of production.

Other information I can provide:

- Library of Resources
  - There are currently 86 document-resources that we have compiled on carbon reduction, digital innovation, and ESG.
  - Over 25 archived webinars and other videos.
- Carbon Reduction/Energy Efficiency Best Practices
  - A list of resources, tools, and funding for reduction of carbon through efficiency.
- Solar Savings Calculator
  - A solar payback calculator in which the impact of the carbon tax has been included.

- Electric Vehicle (EV) and Internal Combustion Engine (ICE) Comparison Calculator
  - Calculator created to determine the difference in carbon output/costs from an EV to a comparable ICE.

The service to SIMSA members has begun. So, if you would like to discuss energy efficiency/carbon reduction or digital innovation, you can start reaching-out to me for assistance at [james.bulmer@simsa.ca](mailto:james.bulmer@simsa.ca).

Our “Events” calendar is busy! See [HERE](#)

## Advocacy

SIMSA has brought it to SaskBuilds’ attention that there is a provision in our steel bridge procurement - CISC Bridge Certification - that drives the work out of the province.

Currently there are no shops in the province that maintain the CISC Bridge Certification (at least we have not heard of any, so please correct me if I am wrong). However, there are 3 in Alberta and 1 in Manitoba. <https://www.cisc-icca.ca/cisc-steel-bridges-certified-directory/> Often, this will also push all other fabrications for the project out of the province as well as contractors will (understandably) want to keep their supply chain as simple as possible. So, not only are the direct and peripheral work leaving the province, but the transportation costs will be substantial.

There is good technical reasoning behind the CISC Bridges standard, but an ISO or ASME certified facility should be able to meet these requirements with some collaboration from the department and consulting engineers. The ISO standard is stronger but could be achieved on a first project. The CISC standard requires a mock-up be made by new entrance, which is costly. See <https://www.cisc-icca.ca/wp-content/uploads/2017/07/CISCBridgeCertificationStandard2018.pdf>

If the ministry engaged with fabricators in the Province – or at least let them know how many of this type of project are planned - a fabricator could achieve this certification on a project or in advance of a project. Our perception is that the trend has been towards more concrete instead of steel in bridges, so it’s been difficult to make a compelling to business case to spend money on a certification that would only be used once or twice a year – but maybe this is not the case? Hopefully we will hear more soon.

# Members' News

[2-Part Compensation Webinar hosted by Sutton Benefits & Pension](#)

[5-Affordable ways to go green](#)

[Key considerations around electric vehicle use on mine sites](#)

[The Pegasus No Longer A Myth](#)

[Team Power Solutions services and tests various types of electrical safety equipment](#)

[Team Power Solutions is offering a Classroom Instructor Led Battery Maintenance Testing Course on December 15th](#)

# Sector News

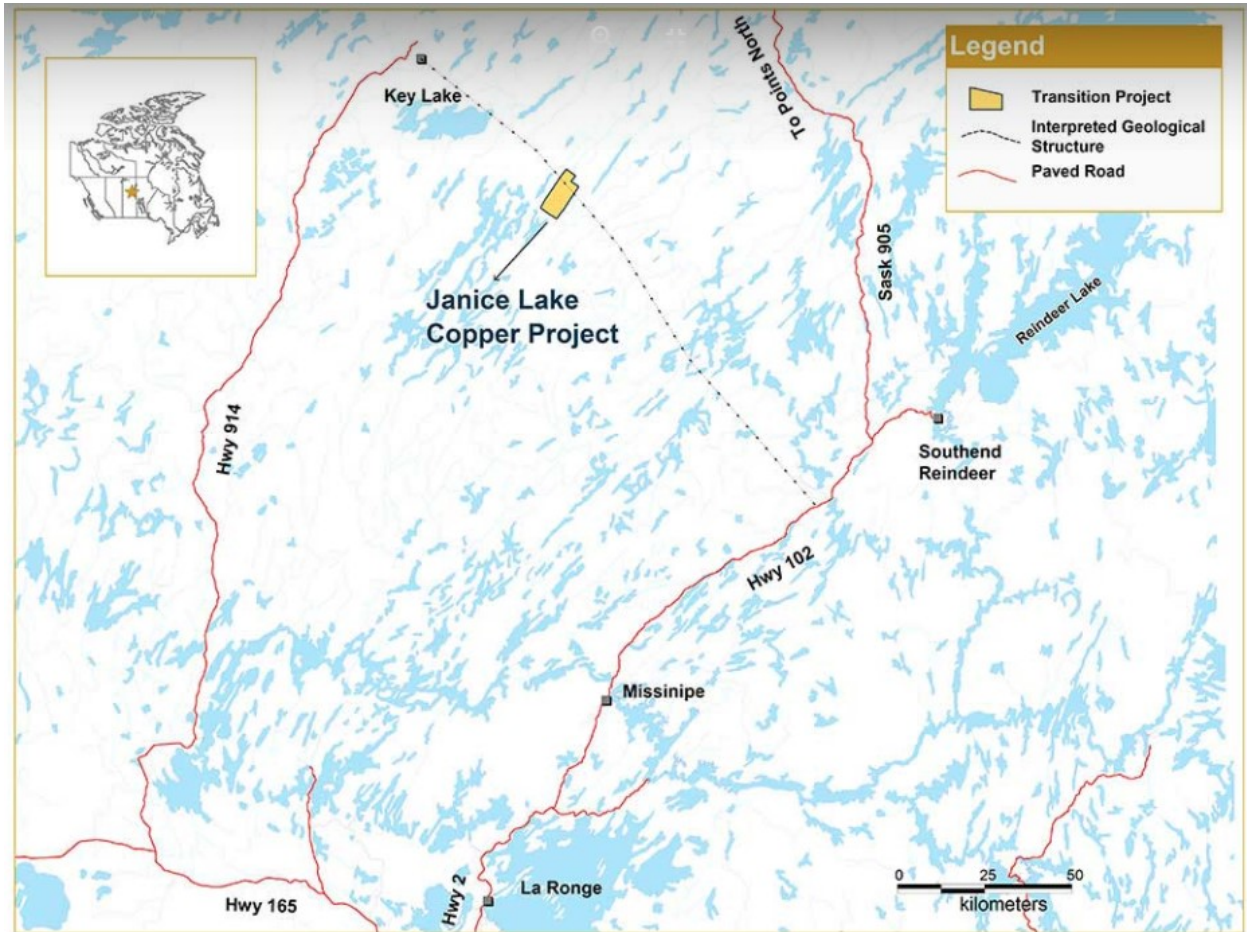
[Rio Tinto](#) – the world's second largest mining company – is quietly becoming a big player in Saskatchewan. To give some scale to this; the world's largest miner's - BHP's - market cap on November 29 was \$140B, while Rio's was \$101B, and Nutrien's (the world's twelfth largest miner) was \$39B.

Rio Tinto is now in Saskatchewan, in at least copper/silver, diamonds, uranium, and potash.

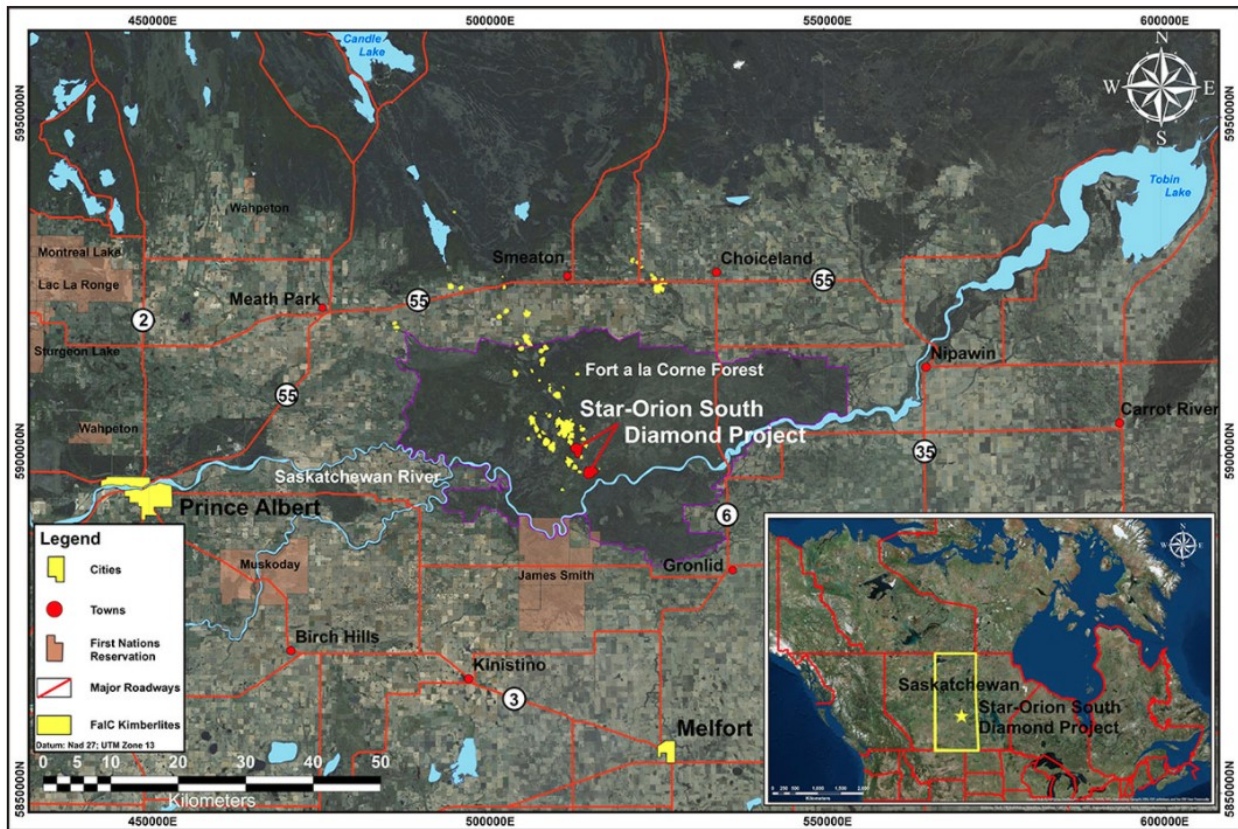
SIMSA has had several conversations with Rio Tinto to keep pace with them and to constantly encourage them to use our database as a shortlisting, much like BHP does.

The following pages note the various projects with maps to aid in locating them.

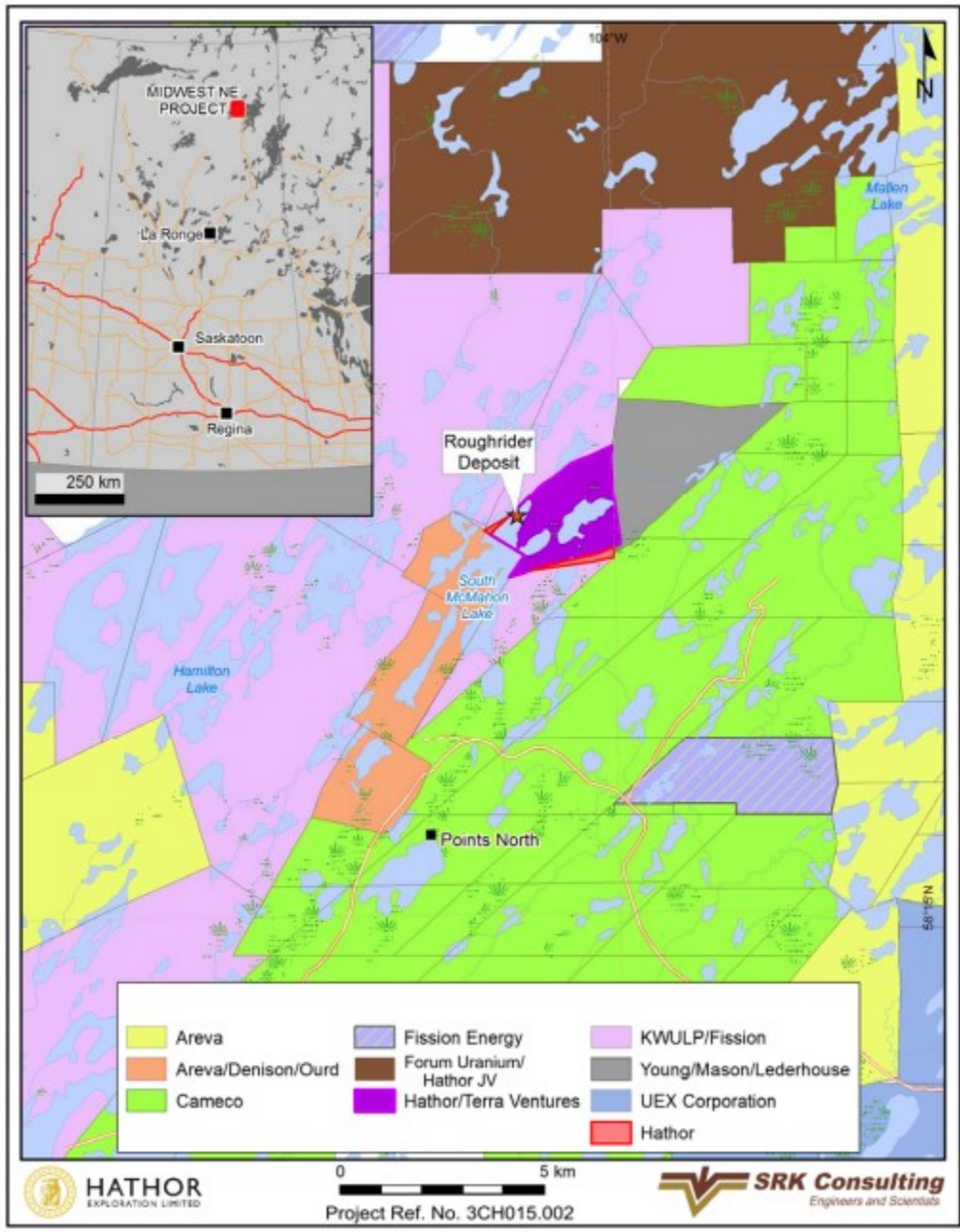
On November 26, it was [announced](#) that Rio Tinto acquired a 51% stake of the Janice Lake copper-silver project, from Forum Energy Metals.



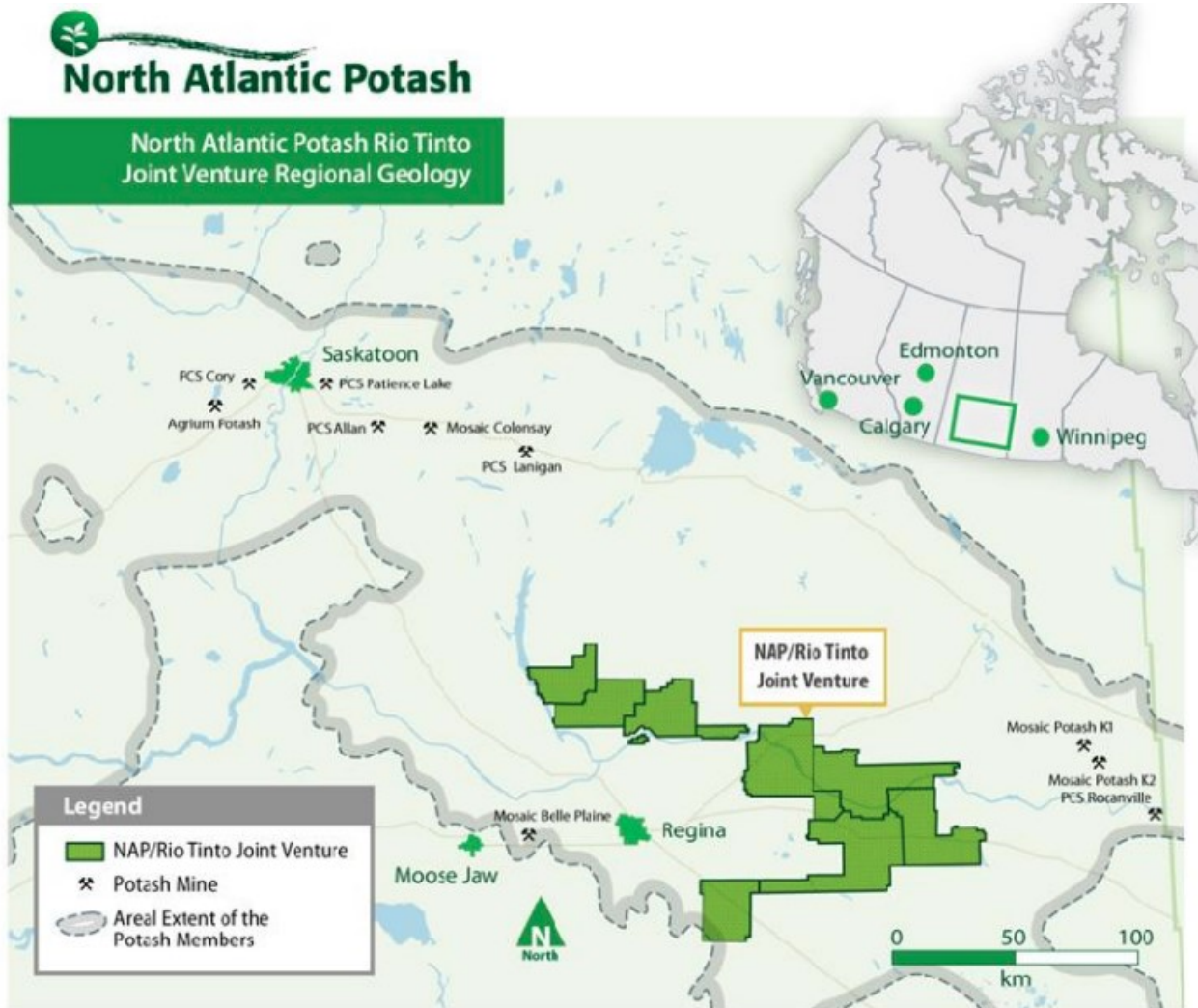
But, before that, they had already acquired a [highly contended controlling interest](#) in the world's largest diamond deposit just east of Prince Albert from Star Diamond.



Rio is also here in uranium after [scooping up Hathor including its Roughrider project](#) in 2011, which was a last-minute competing bid over Cameco.



Rio is also partners with North Atlantic Potash in the [CanPacific Potash](#). Specifically, the Joint Venture is between North Atlantic Potash Inc. (a subsidiary of the Russian JSC [Acron](#)), and Rio Tinto Potash Management Inc. (a subsidiary of Rio Tinto plc). In 2019 their Albany Project received environmental impact assessment [approval](#).



# Upcoming Events

Register for Upcoming Events [HERE](#)

- **Saskatchewan Mining Supply Chain Forum – December 7 & 8, 2021**  
A now 100% virtual event.
- **Aboriginal Awareness Seminar – February 9, 2022**  
A half-day seminar at Wanuskewin Heritage Park that helps to explain today's reality for First Nations and Metis people.
- **Saskatchewan Mining Supply Chain Forum – April 26 & 27, 2022**  
We are planning on this event going back to its original format including attendance from outside of Saskatchewan.



# SIMSA Contacts

**Eric Anderson**

*EXECUTIVE DIRECTOR*

[eric.anderson@simsa.ca](mailto:eric.anderson@simsa.ca)

**Keri Beebe**

*ADMINISTRATOR &  
EVENTS COORDINATOR*

[keri.beebe@simsa.ca](mailto:keri.beebe@simsa.ca)

**James Bulmer**

*INDUSTRIAL CONCIERGE*

[james.bulmer@simsa.ca](mailto:james.bulmer@simsa.ca)



[www.simsa.ca](http://www.simsa.ca)